

# “PARIGI” JERSEY



## CAREZZA yarn

### MATERIALS ADRIAFIL YARNS

### MATERIALS REQUIRED

250 g. yarn **Carezza** yarn cream no. 11 worked double. Knitting needles no. 10. Double-tip cable needle. Tapestry needle.

**SIZE:** 40 (42-44)

### PATTERN STITCHES

Elastic rib  
Knit stitch  
Purl stitch

**Diamond motifs “A” and “B”:** follow chart taking into account the following:

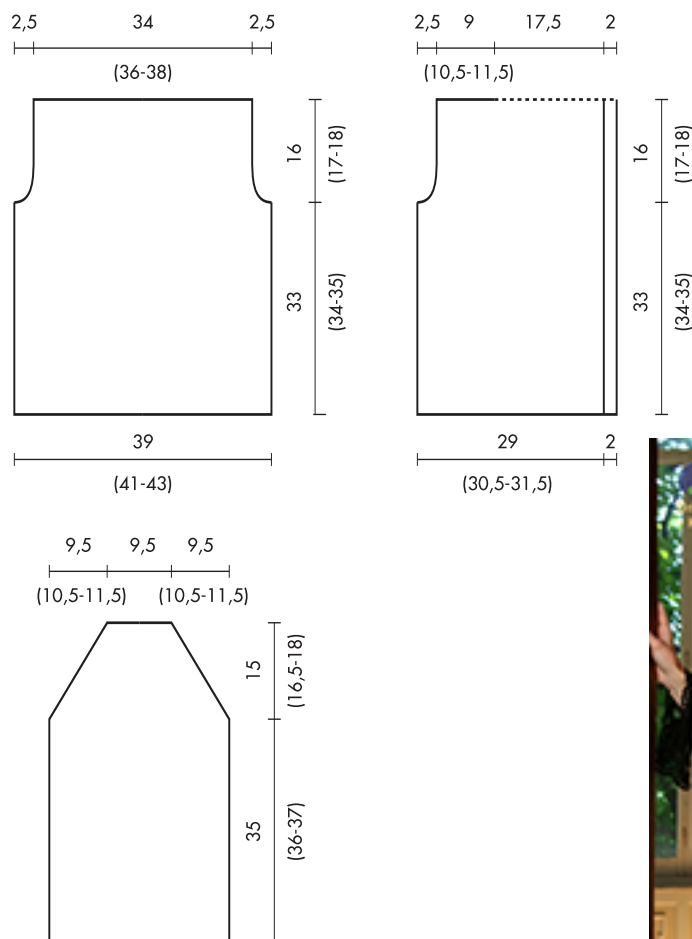
- incr. 2 sts. leftwise A: stand off 1 st. on cable needle in front of work, p1, knit up standing stitches
- incr. 2 sts. leftwise B: knit second row on left needle passing right needle behind stitch 1 without dropping the rem. stitches, knit up first stitch.
- incr. 2 sts. rightwise A: stand off 1 st. on cable needle at back of work, k1, purl standing stitch
- incr. 2 sts. rightwise B: knit up second st. on left needle passing right needle in front of first st. without dropping the sts., knit up first stitch.

**Bobble (work on 1 initial st):** in the same base st. work 3 sts. namely k1, p1 and then k1; turn work, p3; turn work over, k3 tog.

### GAUGE

10x10 cm. with knitting needles no. 10, with yarn worked double and different pattern stitches= 8.5 sts. and 11 rows.

### WORKING INSTRUCTIONS



**Back:** with the yarn worked double, cast on 33 (35-37) sts. and work : 2 (3-4) sts. in purl st, k1 , 27 sts. for the diamond motif “A” following the chart, k1, p2 (3-4) . When work measures 33 (34-35) cm. to shape the armholes bind off on sides 1 st. every 2 rows 2 times. When work measures 16 (17-18) cm. from beg. of armholes, bind off all the rem. stitches.

**Right front:** with yarn worked double cast on 29 (30-31) sts. and work : 4 sts. in elastic rib (buttoning edge), p5 , k1, 16 sts. for the diamond motif “B” following the chart, k1, p2 (3-4). When work measures 33 (34-35) cm. to shape the armholes on left of work in same way as back. When work measures 49 (51-53) cm. on left of work 8 (9-10) sts. for the shoulder. Stand off the 19 sts. rem. for collar.

**Left front:** work to match right front.

**Sleeves:** with yarn worked double, cast on 24 (26-28) sts. and work : p3 (4-5) , k1, 16 sts. for the diamond motif “B” following the chart, k1 , p3 (4-5). When work measures 35 (36-37) cm. to shape the armholes, bind off on sides 1 st. every 2 rows 8 (9-10) times. When work measures 15 (16.5-18) cm. from beg. of armholes, bind off the rem. 8 stitches.

### MAKE UP AND FINISH

Sew shoulders. With yarn worked doubled pick up the 19 standing sts. of the right front, 17 (19-21) sts. along the back neckline, the 19 standing sts. of the left front; for the collar work : 4 sts. in elastic rib (right buttoning edge), p5, slip 1, knit 1 pass slipped st. over, p2 tog. twice, k1, p2, p19 (21-23)., p2 tog., k1, p2 tog. twice, k2 tog., p5 , 4 sts. in elastic rib (left buttoning edge). When work measurs 9 cm. from beg. of collar, bind off all the sts. loosely. Join and sew on the sleeves. Sew up the sides.

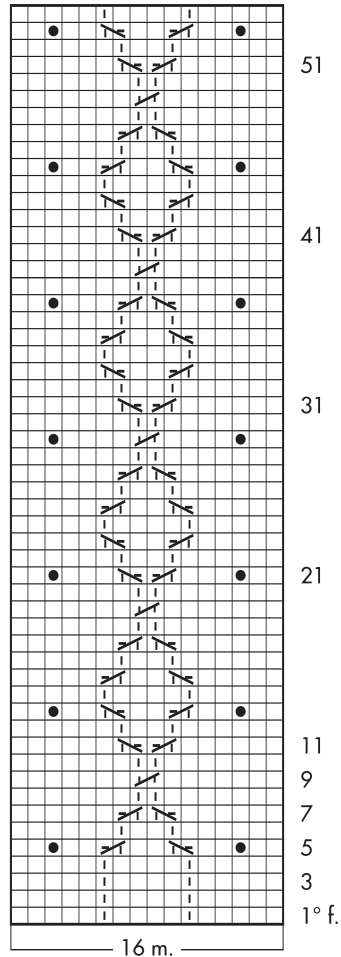


# “PARIGI” JERSEY

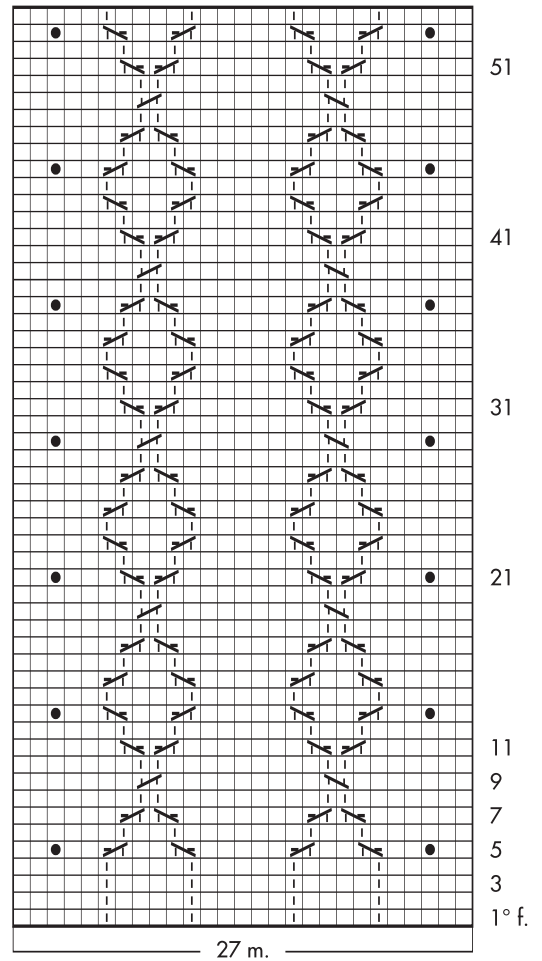


## CAREZZA yarn

Motivo a losanghe "B"



Motivo a losanghe "A"



- = 1 m. a m. ras. dir.
- = 1 m. a m. ras. rov.
- ▤ = 2 m. incr. a sinistra A
- ▥ = 2 m. incr. a sinistra B
- ▧ = 2 m. incr. a destra A
- ▨ = 2 m. incr. a destra B
- = 1 nocciolina

Ogni quadretto corrisponde a 1 m. e a 1 f.